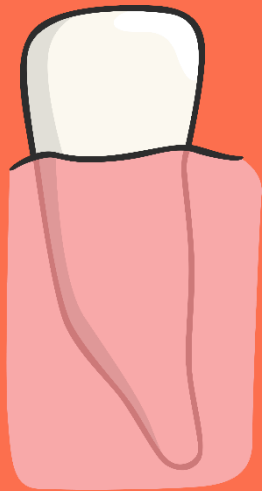


Teeth

Types Of Teeth

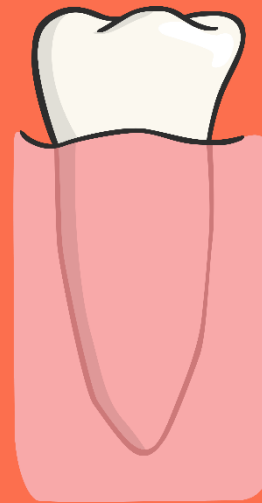
Match the types of teeth with their names.



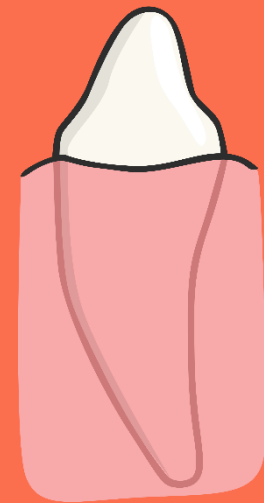
Incisor



Molar

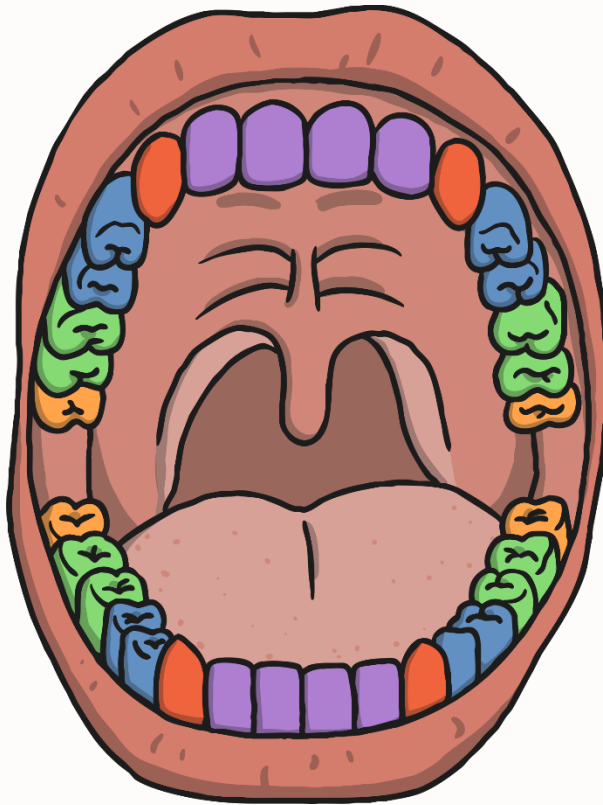


Premolar



Canine

Functions of Teeth



- Canine
- Molars
- Premolars
- Incisors
- Wisdom Teeth

Why do you think we have different types of teeth?

What is their purpose?

Incisors

How many?

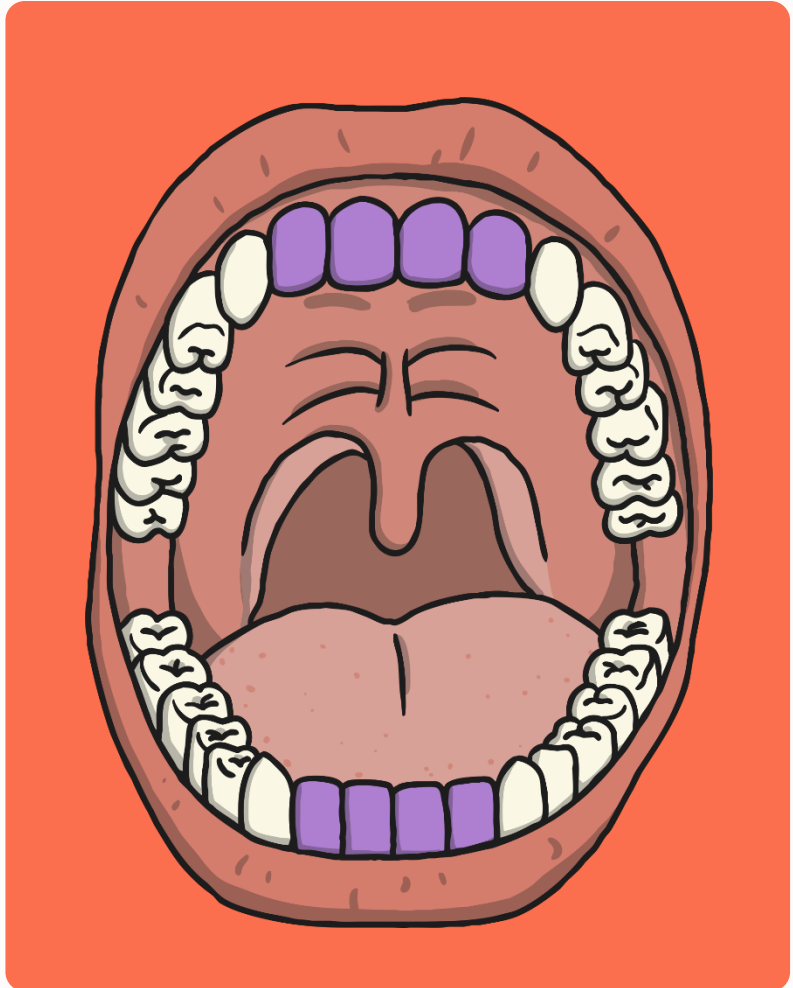
Humans have 8 incisors altogether; 4 in the upper jaw and 4 in the lower jaw.

Shape

Incisors are shovel-shaped.

Function:

Used for biting and cutting food.



Canines

How many?

Humans have 4 canine teeth, one in each quarter of the mouth, on either side of the incisors.

Shape

Canines are pointy.

Function:

Used for tearing and ripping food.



Premolars

How many?

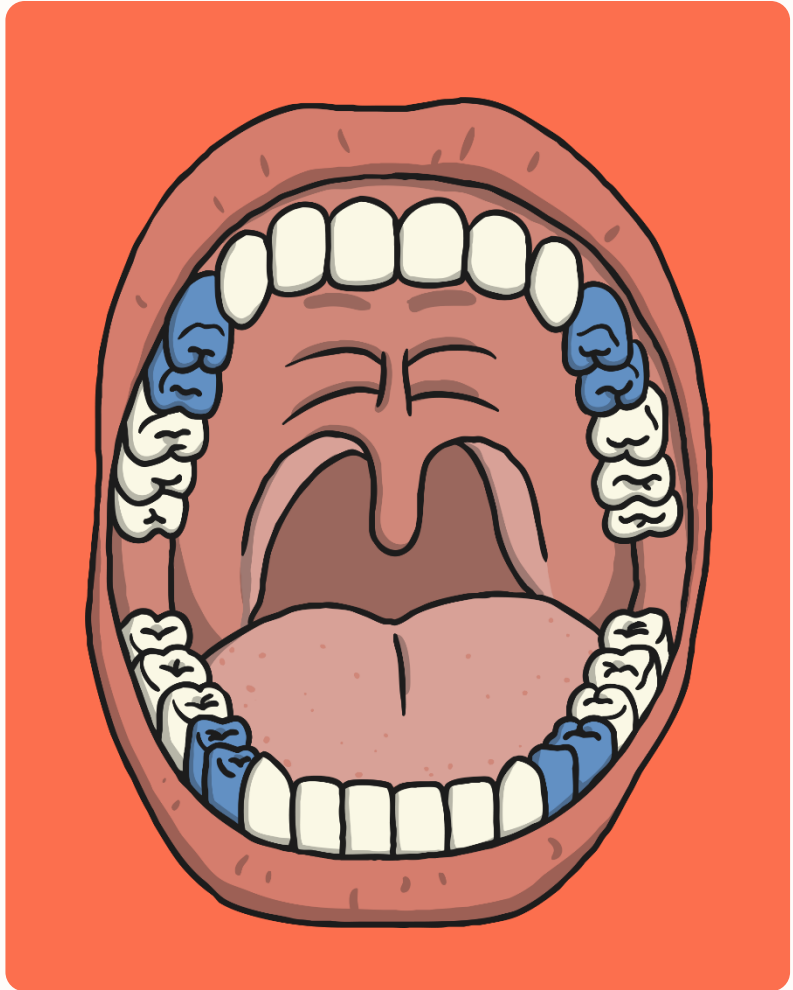
Humans have 8 premolars, two in each quarter of the mouth. They are between the canine tooth and the molars.

Shape

Small and flat

Function:

Holding and crushing food.



Molars

How many?

Humans have 8 molars, two in each quarter of the mouth. They are at the back of the mouth behind the premolars.

Shape

Large and flat

Function:

Grinding food



Wisdom Teeth

How many?

Humans can have up to 4 wisdom teeth, although not everyone has them. There is 1 in each quarter of the mouth behind the molars.

Shape

Large and flat (they are just a third molar)

Function:

Does not have one now! Some scientists think that human ancestors needed a third molar to help grind down plant tissue from thicker leaves when humans still ate them. Since the diet of humans has changed we don't need them.

As the human diet changed our mouths have become smaller. This is the reason why many people have their wisdom teeth extracted – taken out – as there is no real room for a wisdom tooth so it tends to grow inward and can become a problem.

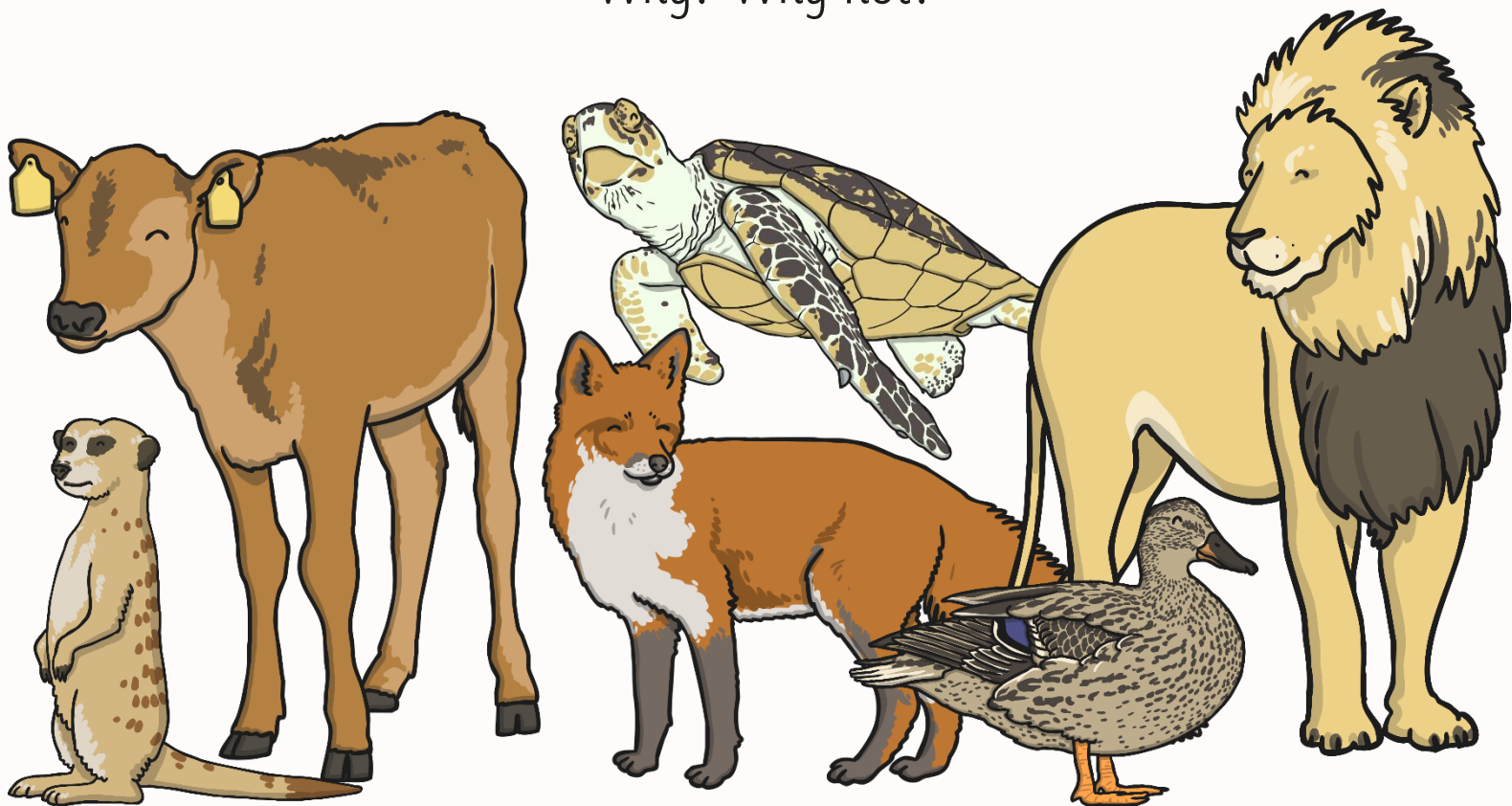


Animal Teeth

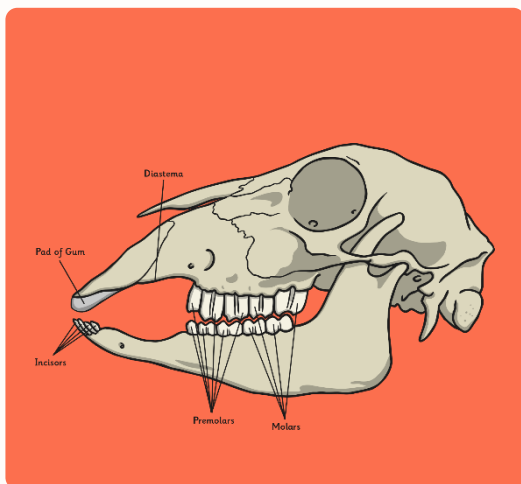


Do other animals have the same type of teeth as humans?

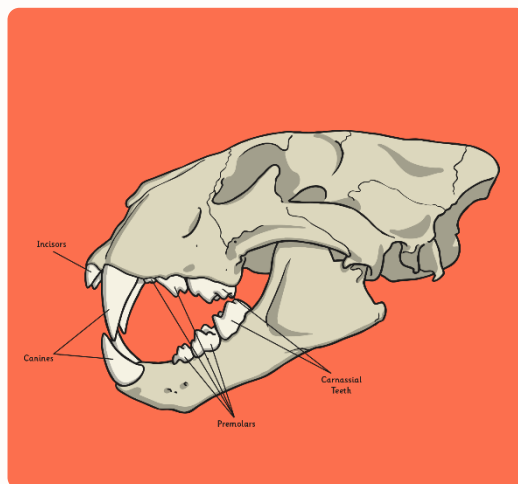
Why? Why not?



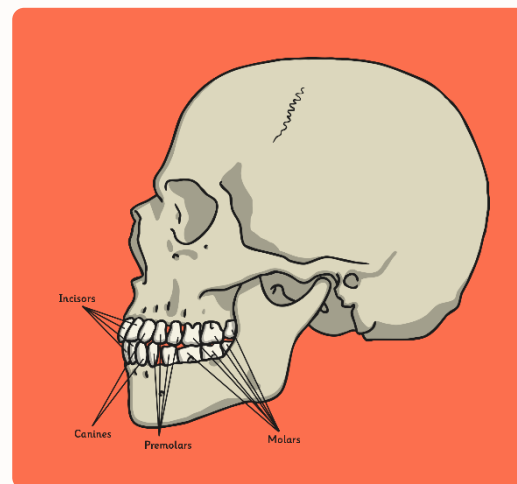
Food and Teeth



Herbivores eat plants



Carnivores eat only meat

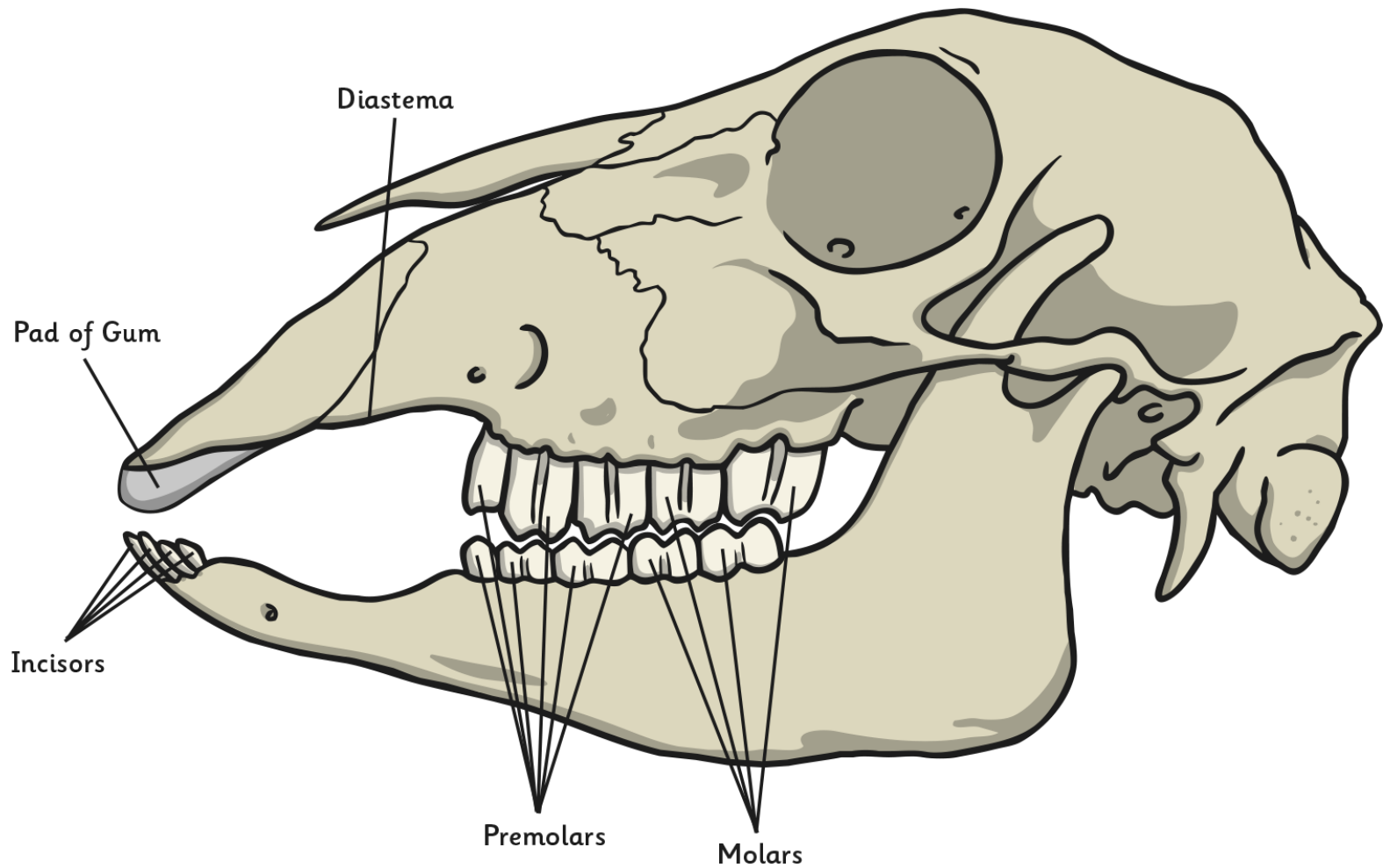


Omnivores eat plants and meat

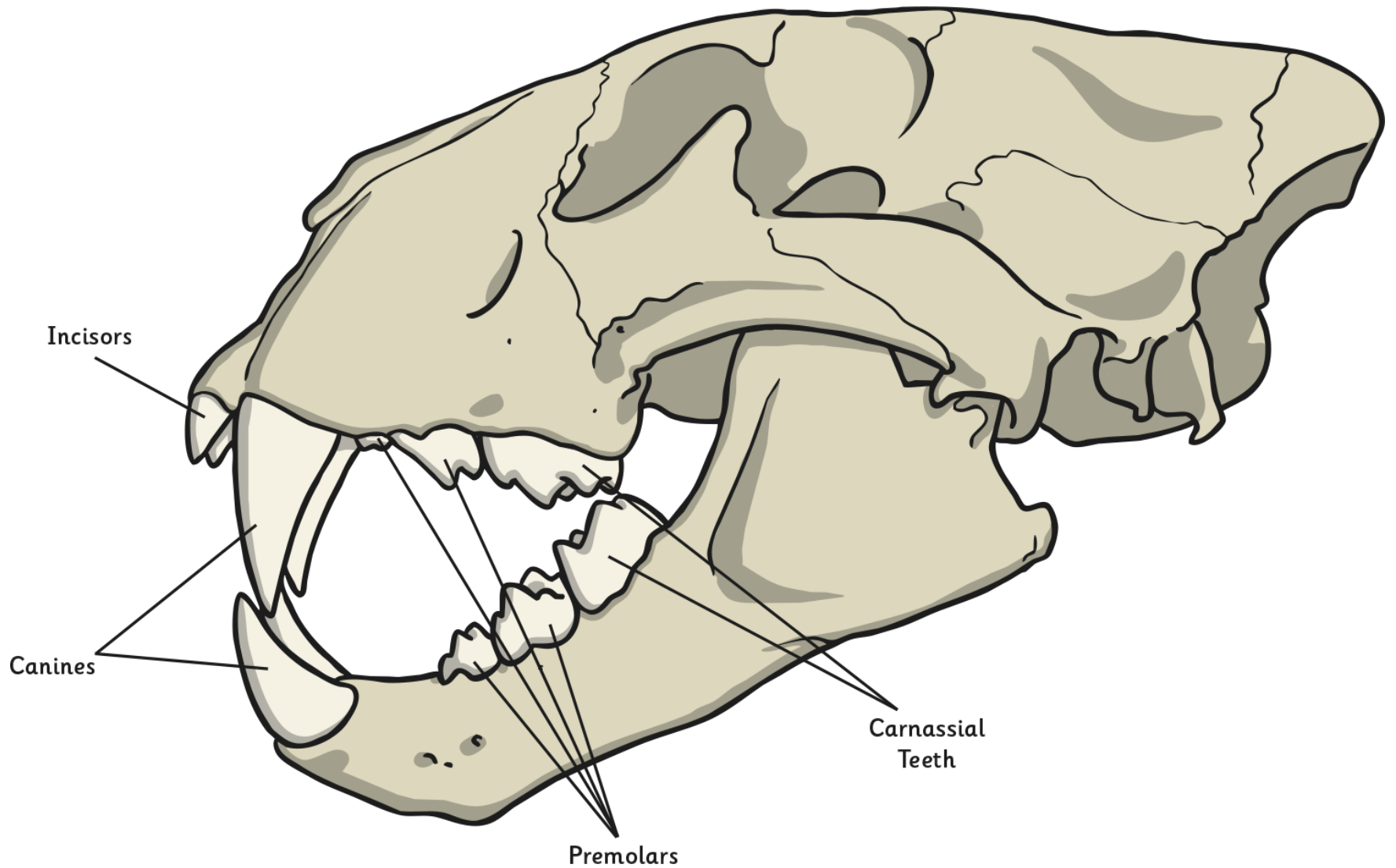
Discuss with a talk partner:

How does the food the animal eats affect the teeth it will have?

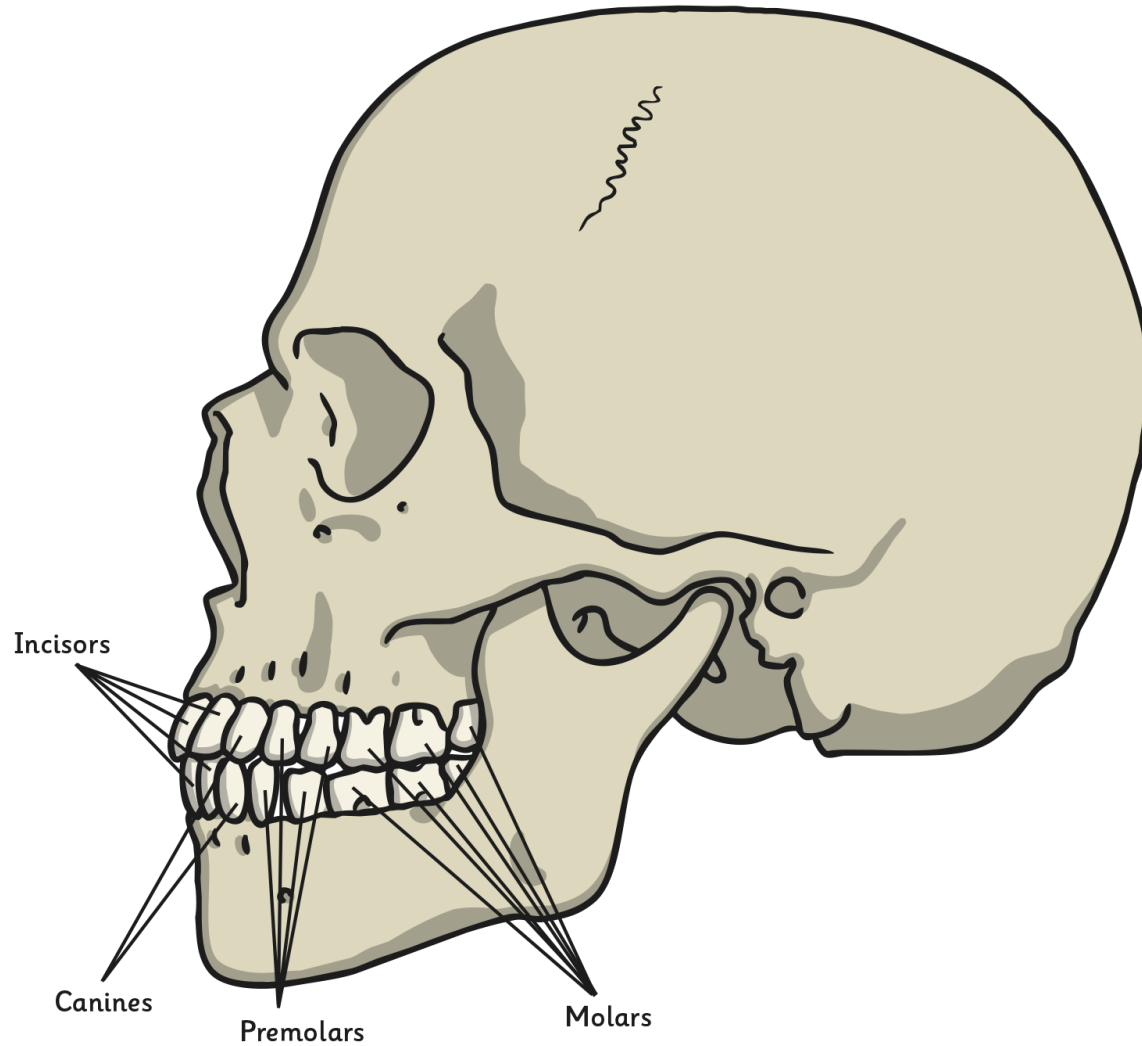
What similarities and differences do you notice?



Sheep skull. Click again to go back.



Lion skull. Click again to go back.



Human skull. Click again to go back.

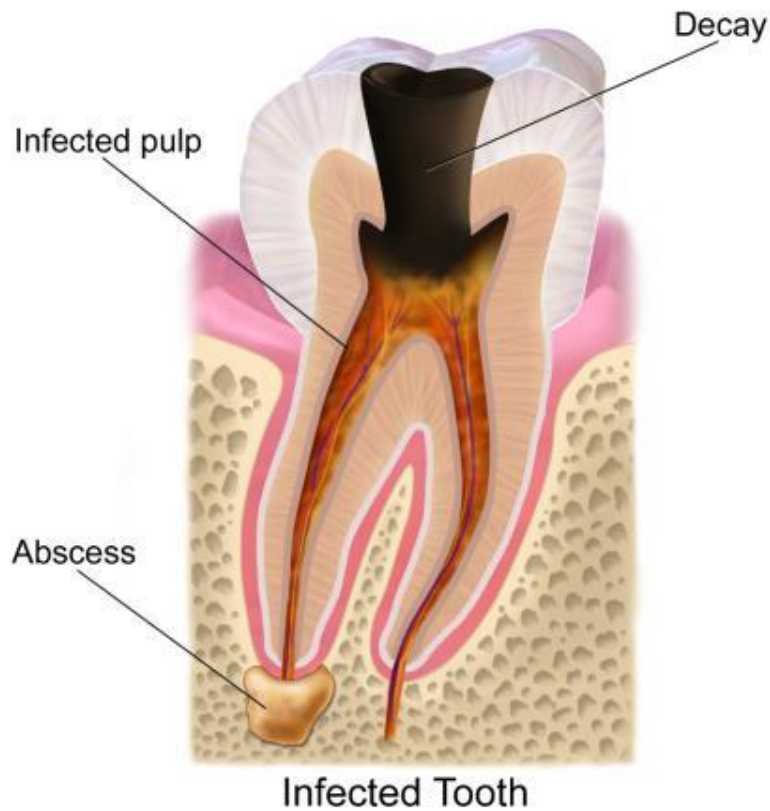
Activity 1

Complete activity 1 before moving on to the next slide.

Discuss: why is it important to brush and look after our teeth?



Tooth Decay



Discuss the following questions with your talk partner:

What is tooth decay?

What causes tooth decay?

How do you know?

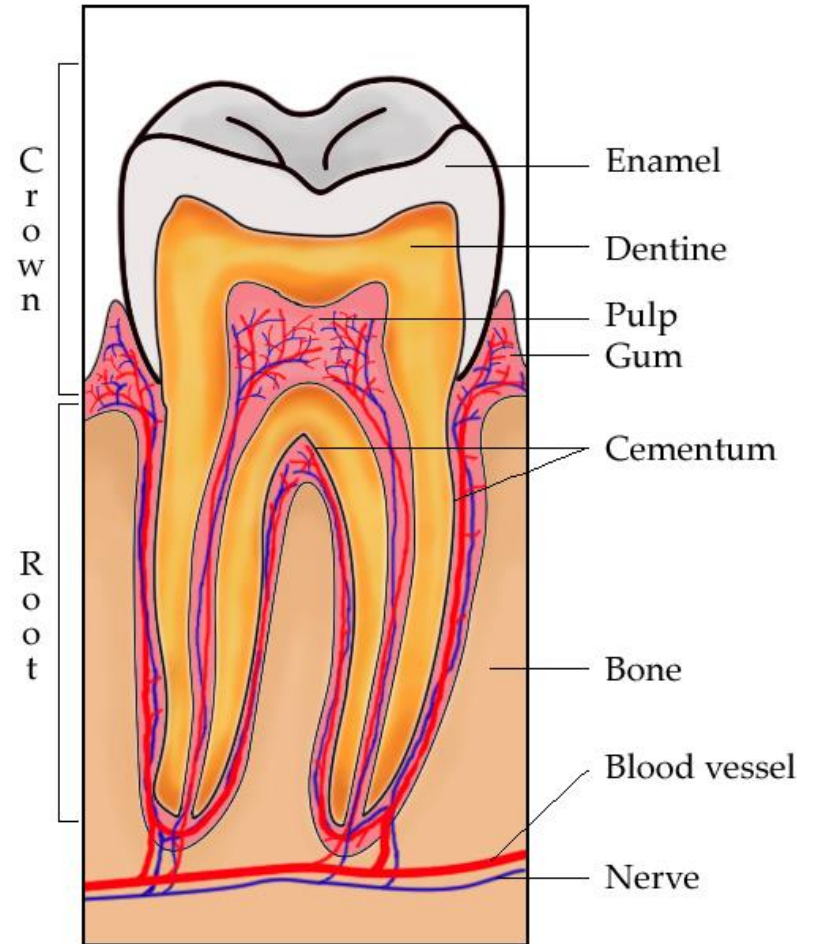
Image courtesy of BruceBlaus (@Wikipedia.com) - granted under creative commons licence – attribution

Your **teeth** are a very important part of your body because they bite and chew your food. When you smile and laugh you show your teeth.

Your teeth are a living part of your body. The part you see is called the **crown**. It is covered with **enamel**. Tooth enamel is the hardest part of the body. It is even harder than bone. However if you get a hole in your tooth the enamel can't grow back again.

The **root** holds the tooth firmly into the jawbone. The roots are covered by the **gums**. Inside each tooth is a soft part called the **pulp**. Your heart pumps blood to the pulp to keep the tooth alive.

The **nerve** connects your tooth to your brain. If you have toothache the nerves are telling the brain that there is something wrong with the tooth. The pulp has a hard covering called the **dentine**. The dentine in the crown is covered by enamel.



Activity 2

Activity 2 is a tooth decay investigation using hardboiled eggs.

You will need permission from an adult and their support setting up the investigation.

PLEASE ASK YOUR ADULTS TO HARDBOIL THE EGGS.

If you are unable to do the investigation, watch this video instead <https://www.bbc.co.uk/bitesize/clips/zh2kjxs>