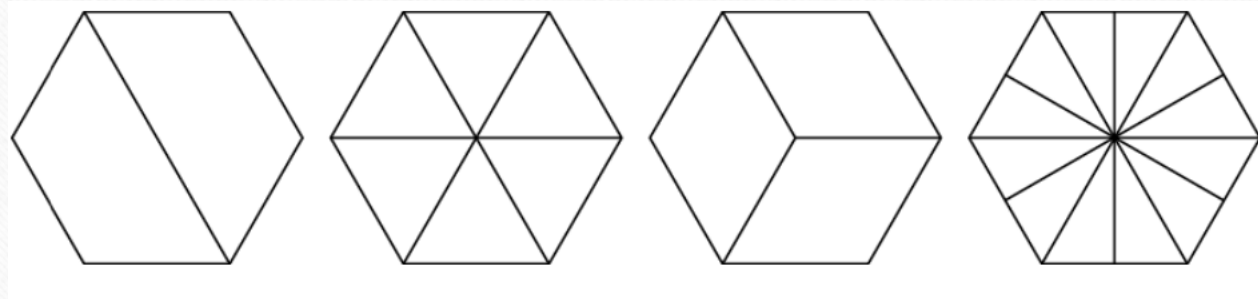


Maths PowerPoint 1

WB 1.6.20

Have a look at the images below, what is the same and what is different about them?



The whole is the same but the parts are different.

What about this one? What is the same? What is different? Are the parts equal or unequal?

A



B



C

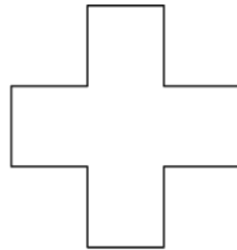


The length of the line is the whole. Each segment on the line is a part. The whole is the same every time but the parts are different. The parts on line B are bigger than on lines A and C.

Now that we have reminded ourselves of what we have been learning and pulled the information from the back of our minds, have a look at this.

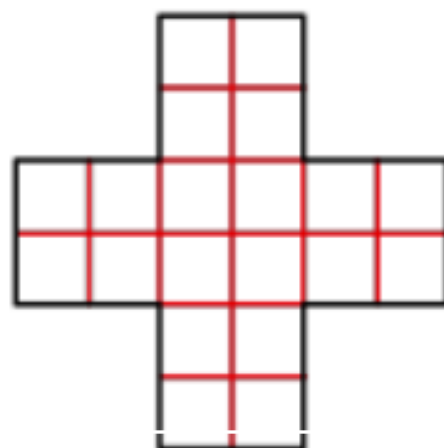
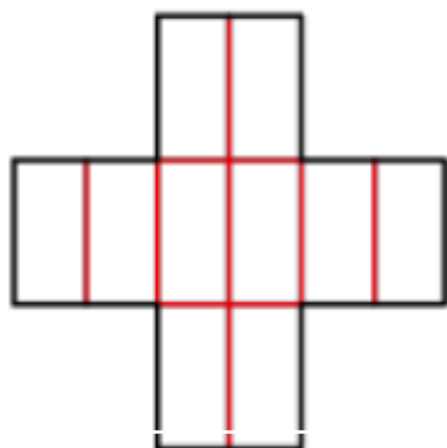
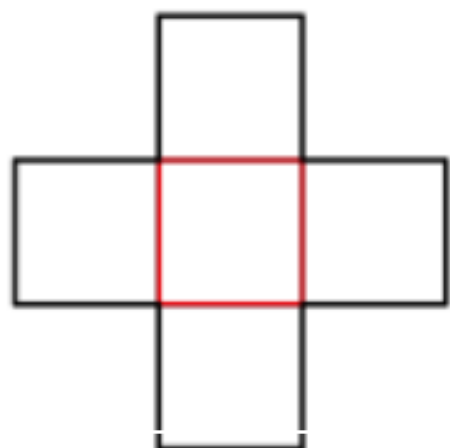
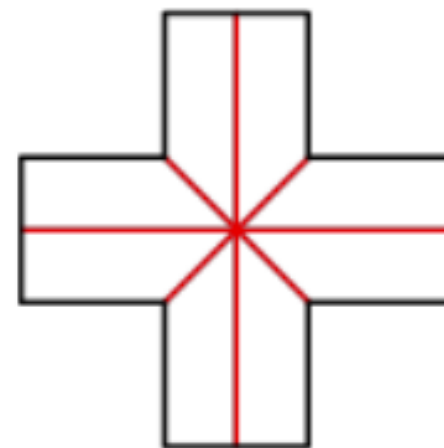
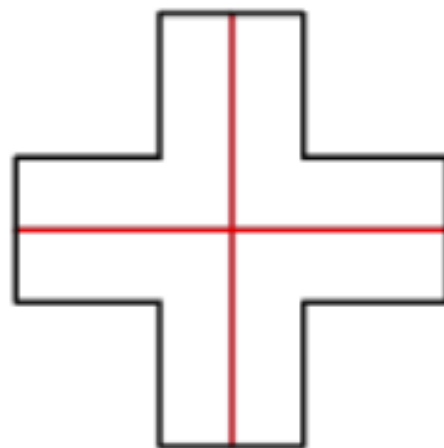
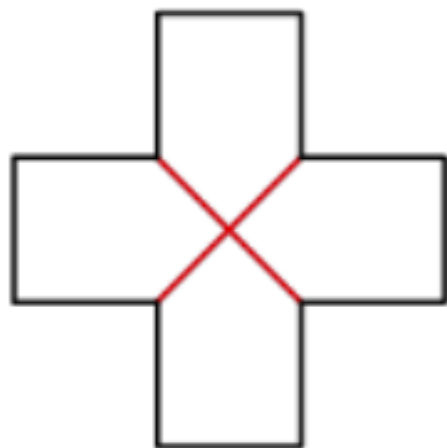
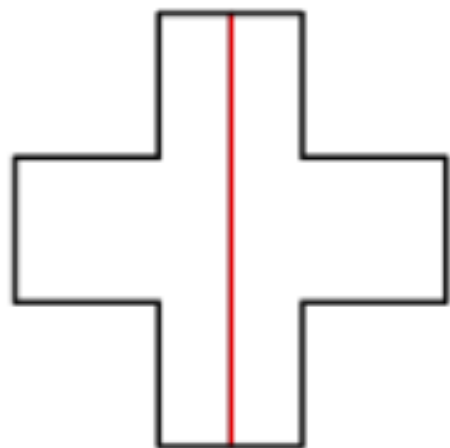
Activity 1

- *'Find how you can divide this shape into:'*
 - *'two equal parts'*
 - *'four equal parts'*
 - *'five equal parts'*
 - *'eight equal parts.'*
- *'You might find more than one way for each.'*
- *'What other number of equal parts can you divide it into?'*



You can check
your answers on
the next slide.

Possible answers



As an extra challenge, you could choose different shapes, like we did on the previous slide and have a go at dividing it into:

2 equal parts

4 equal parts

5 equal parts

8 equal parts

Observe and notice what happens to the parts when there are 8 parts compared to only 2 parts.

