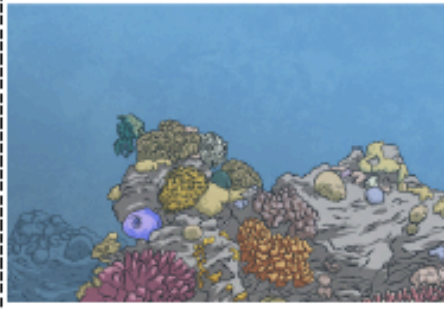


Science Activity – Adaptive Traits

[illegible]



Camel



Coral Reef

Its white fur enables it to camouflage in the snow.



Dolphin

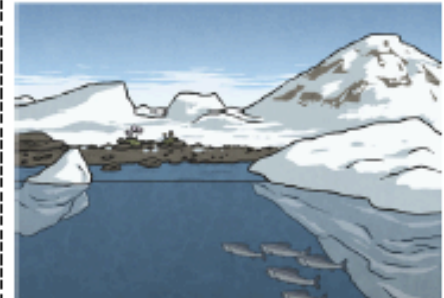


Desert

It has wide feet to make it easier to walk in sand.



Coral



Arctic

It stores water in its stem.



Hedgehog

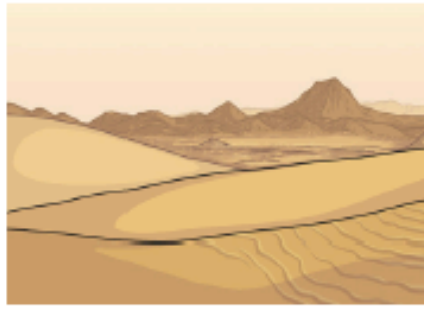


Woods

Its narrow tongue allows it to eat small fruit and insects.



Polar Bear



Desert

It has spines to protect itself.



Toucan



Forest

Its nostrils are on the top of its head so that it only has to break the water to breathe.



Ash Tree



Rainforest

It contains toxins that makes it unappetizing to certain predators.



Cactus



Ocean

It has broad leaves, which enables it to catch more sunlight.